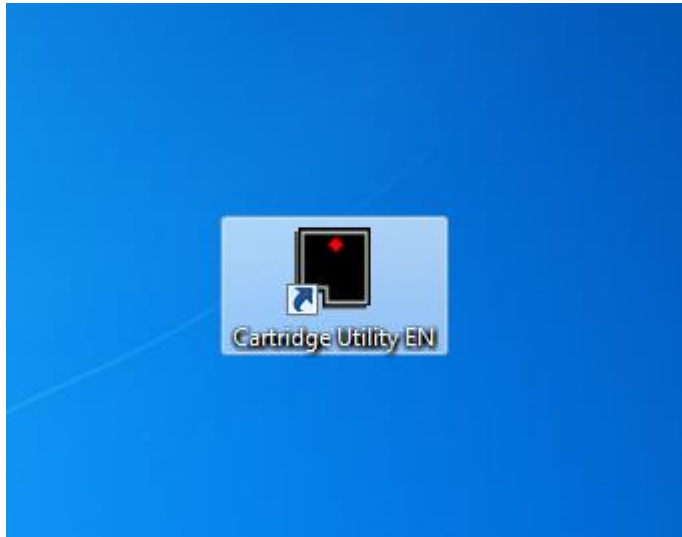


Cartridge

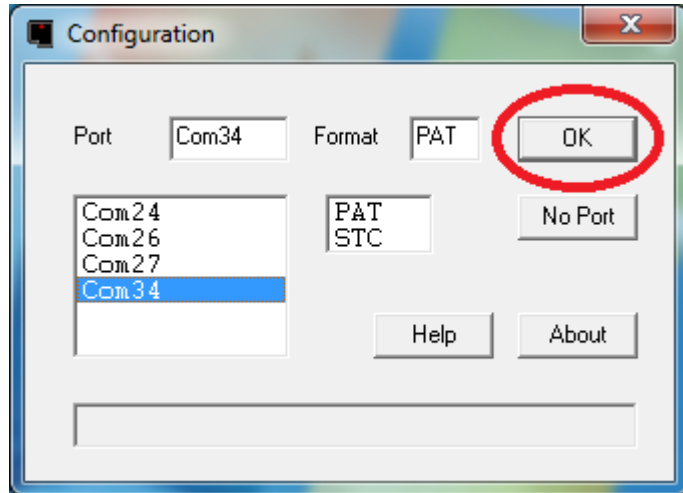
Prepare a cartridge to knit the DesignaKnit
pattern acorn.stp for use in the CK35

Cartridge



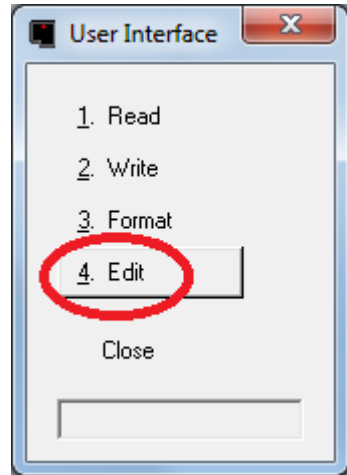
Double click on the Cartridge Utility icon to start Cartridge Utility. Make sure the Cartridge is hooked up to your computer.

Cartridge



The first window you see is the Configuration window. To the left you see a list of available com ports. Select the port that the Cartridge is connected to. Press OK to continue.

Cartridge



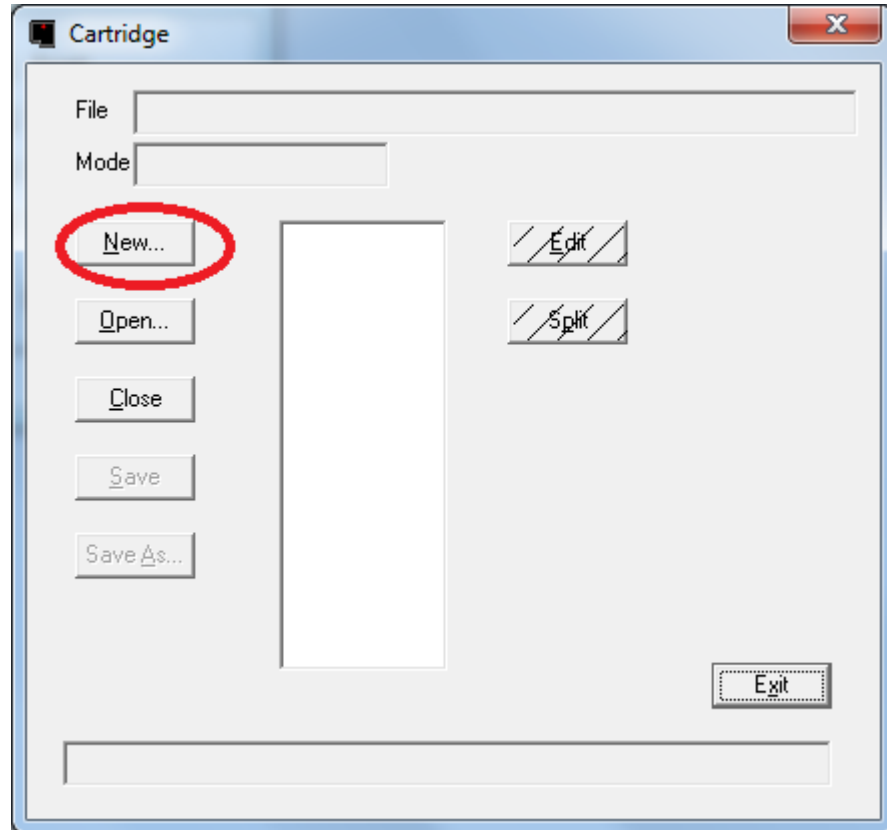
The User Interface window is the central window in Cartridge Utility. It shows a menu of operations one can do with a Cartridge. You can Read the contents of Cartridge and store on your computer, Write new contents from your computer into Cartridge or Format Cartridge for a your knitting machine.

The contents of Cartridge is stored in a Brother Pattern Memory (BPM) file.

The first thing we need to do is create a BPM file that will contain the pattern to be knitted.

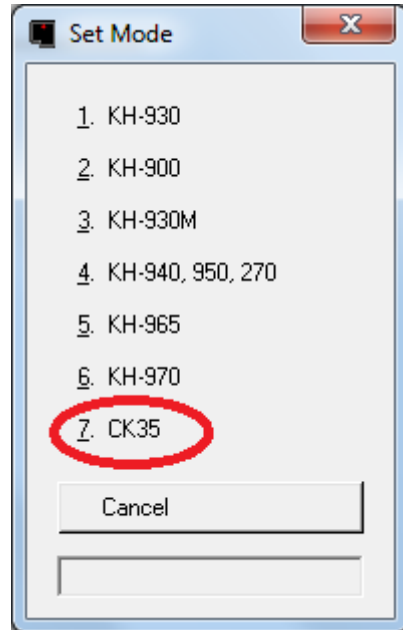
Press Edit to go to the Cartridge Edit window.

Cartridge



As you don't have anything yet, you create a new Brother Pattern Memory by pressing the New button.

Cartridge



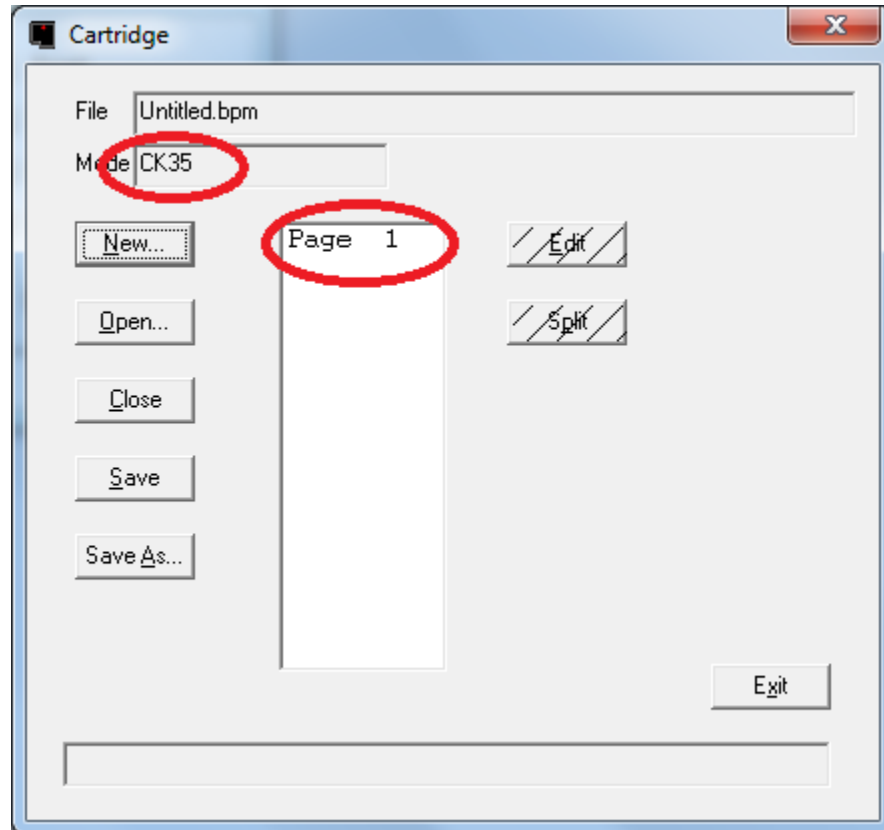
There are various Brother Pattern Memory formats.
They all can use the same Cartridge.

Your selection here determines in which knitting machine you can use Cartridge.

Press CK35 to create Brother Pattern Memory for the CK35

Note: If you also want to use Cartridge in the PPD, you need to have matching PPD software installed in the Cartridge you are using.

Cartridge



The contents of a blank CK5 Brother Pattern Memory is displayed.

There is room for one page on a Cartridge, hence one page in the Brother Pattern Memory.

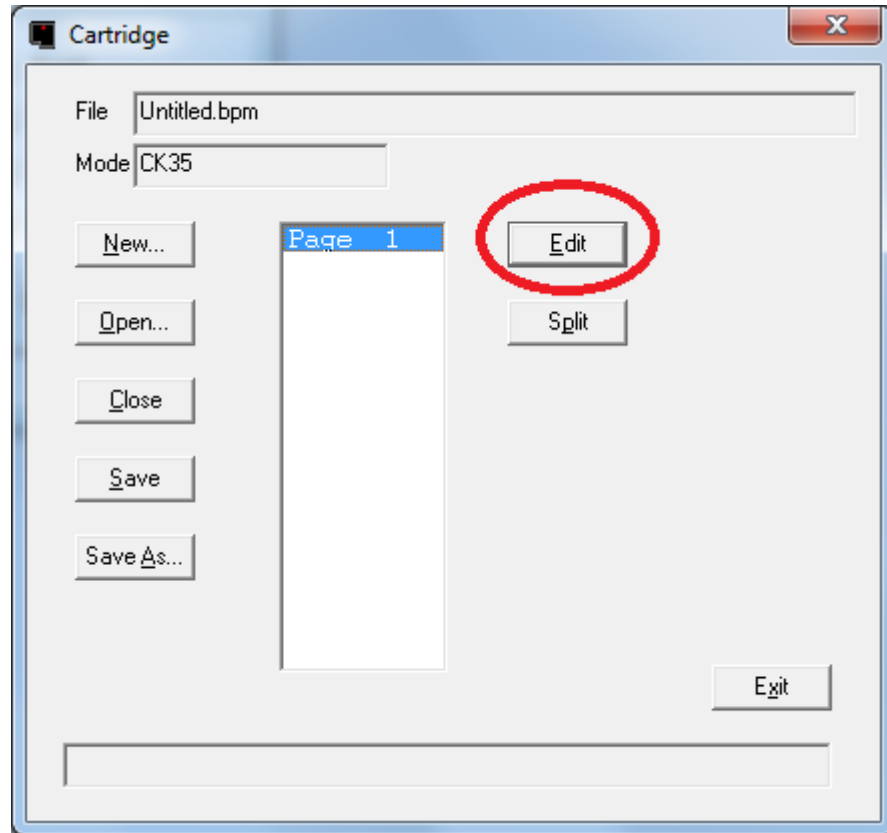
The name Untitled.bpm can be changed later when you decide to store your work on your computer.

You can see that the Mode is CK35 and that there is only one page.

Select Page 1, which will turn blue.

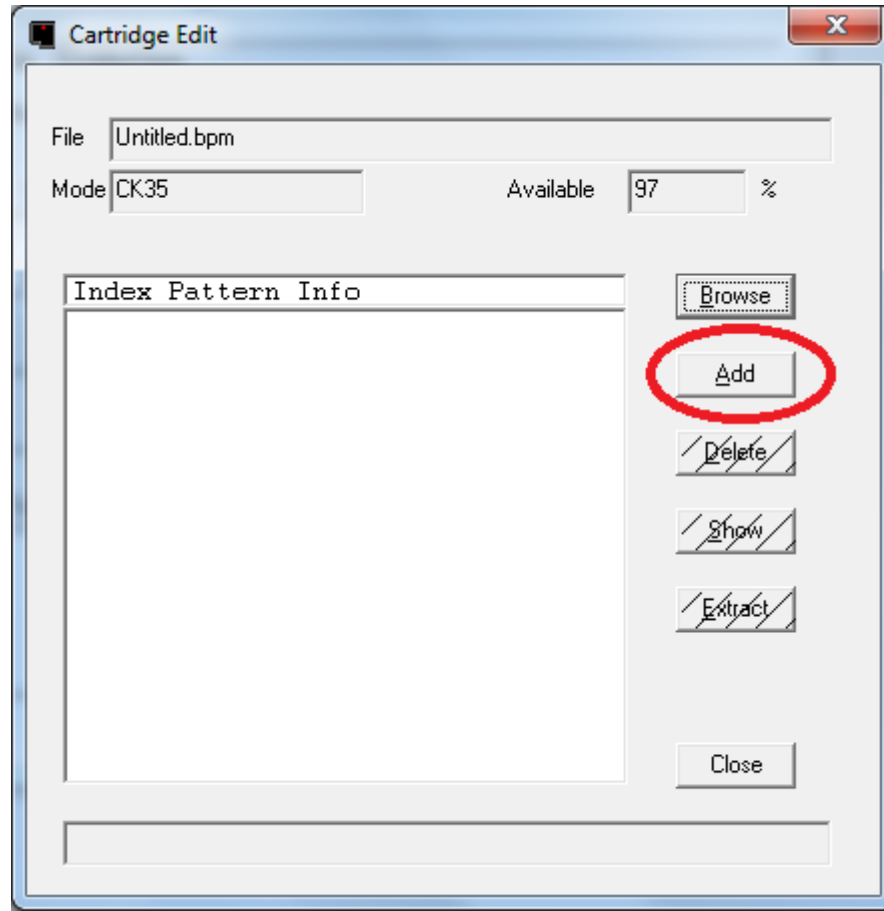
The Edit button becomes available.

Cartridge



Press Edit to add a pattern and a block to the Brother Pattern Memory

Cartridge



Here you can edit the contents of the Brother Pattern Memory.

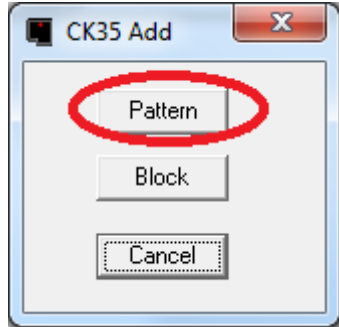
The table on the left shows the current contents which is empty. The table can contain one or more patterns and one or more blocks.

First you need to add one or more patterns and after that you need to add one or more blocks to knit the patterns.

The CK35 knits blocks, not patterns.

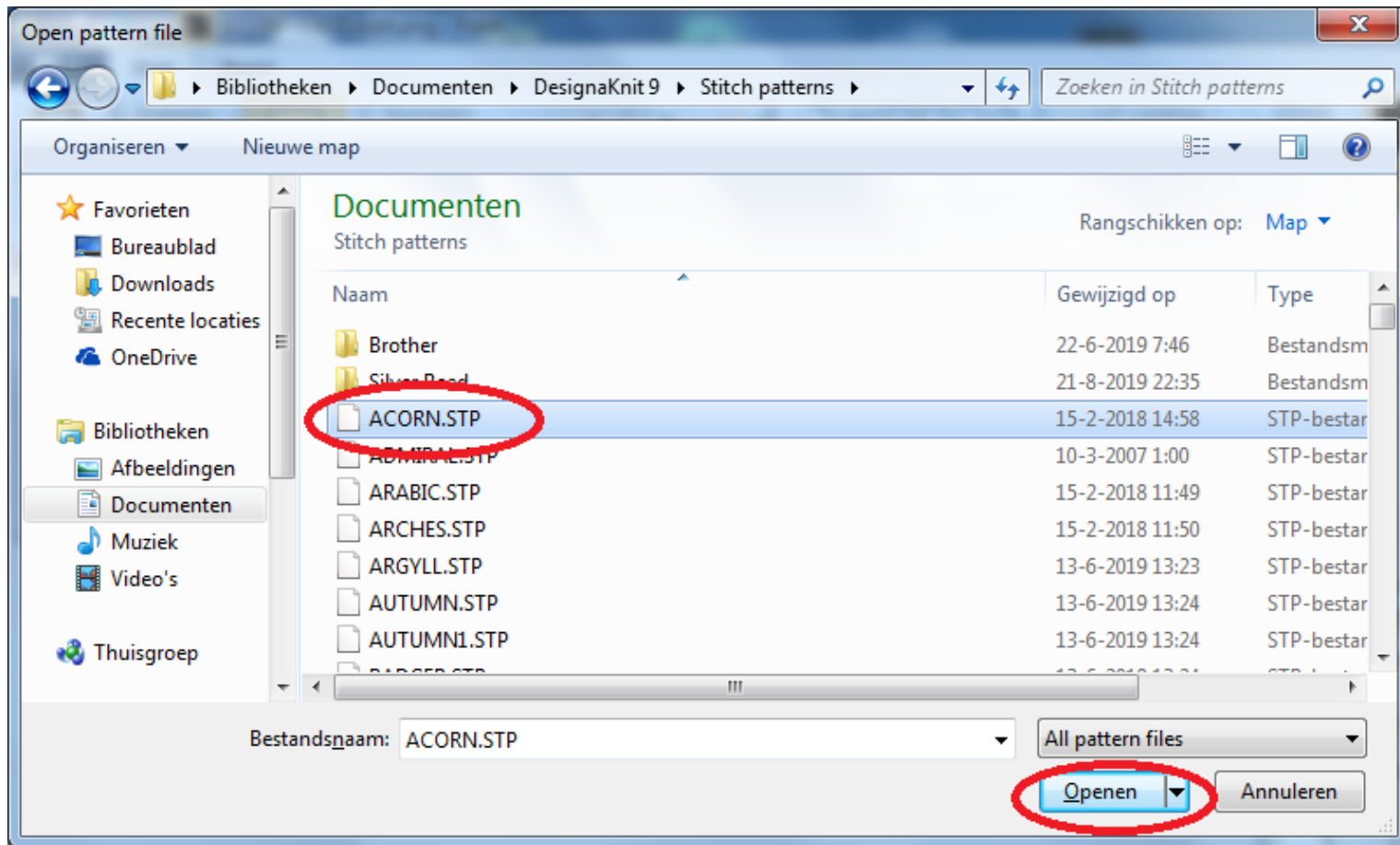
Press Add to add a pattern.

Cartridge



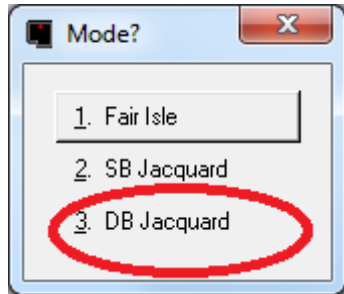
Press Pattern to pick a pattern and add it to the Brother Pattern Memory.

Cartridge



On the Open Pattern file dialog select acorn.stp from the list of DesignaKnit patterns. The pattern will turn blue. Press the Open button to add the pattern acorn.stp

Cartridge



You are invited to select the pattern mode you want to use.

The acorn pattern is a 2 color fair isle pattern.

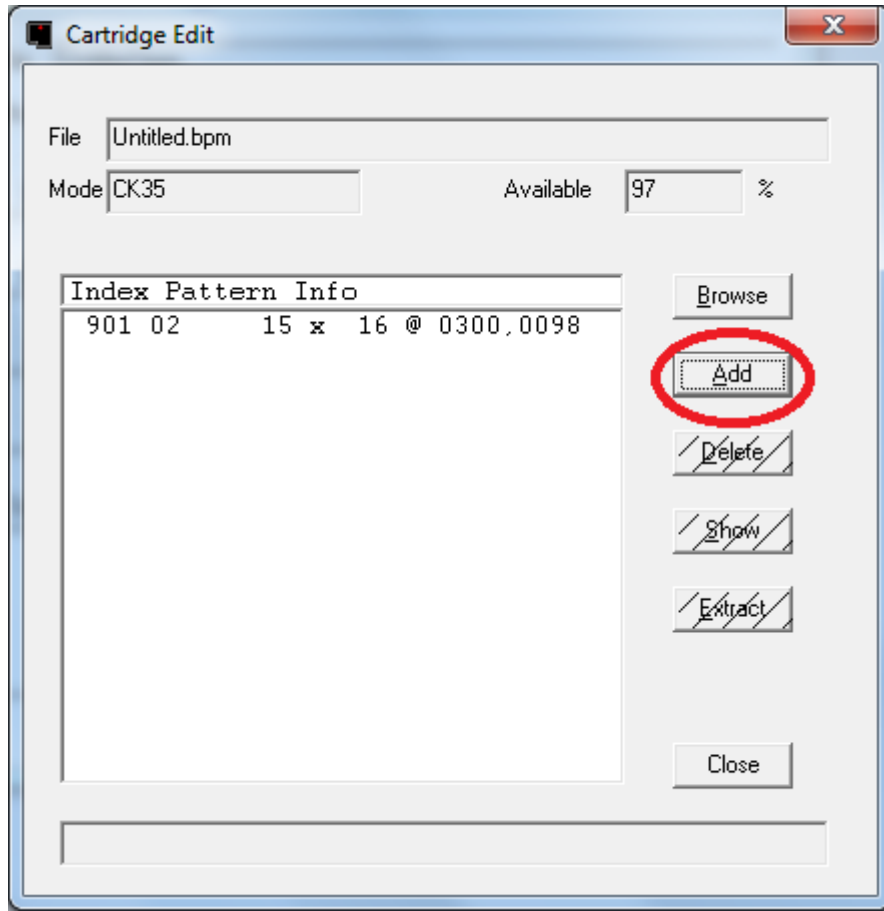
It is possible to knit fair isle patterns a Jacquard, hence the choice to select the pattern mode.

This is handy for DesignaKnit users as you don't have to have multiple versions of the pattern in DesignaKnit.

For 3 and 4 color patterns you will have the choice between SB jacquard and multi color.

I chose to press DB Jacquard.

Cartridge

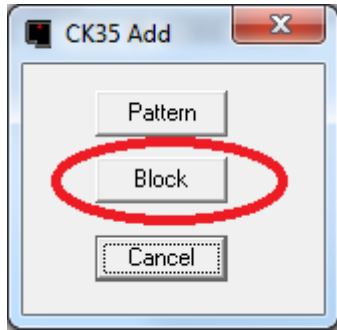


The pattern you added is displayed in the directory.
901 is the pattern number
02 is the pattern mode
15 x 16 are stitches and rows
0300, 0098 position and size (technical data)
Press Add to add a block (CK35 can only knit blocks)

Pattern modes

- 0: Other
- 1: SB Jacquard
- 2: DB Jacquard 2 color
- 3: DB Jacquard 3 color
- 4: DB Jacquard 4 color

Cartridge



Press Block to add a block.

Cartridge

Block Editor - Block

Block No. Total Rows

Pattern No.

Stitches / Rows

Start Row

Knitting Rows

End Needle Selection

Arrange

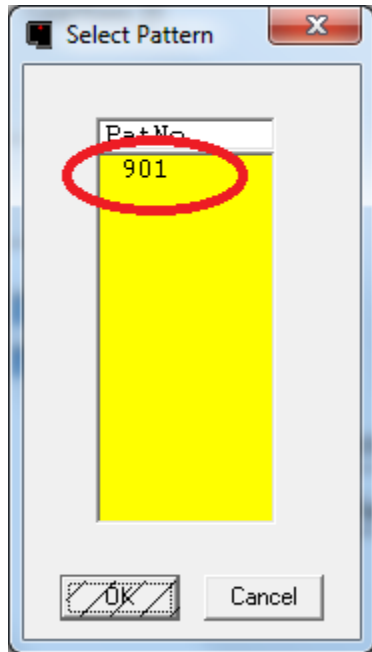
Pattern Position R/L Needle No

Block | Holder Position | Knitting Range | Stop Positions

An empty block is displayed.

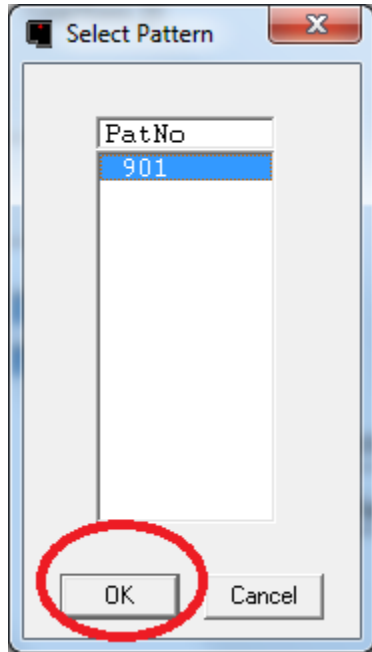
You need to add a pattern to the block. Press Add Before or Add After to add a pattern to this block.

Cartridge



The list of patterns in the Brother Pattern Memory is displayed. When there are more patterns in the Brother Pattern Memory, you will see a list of all patterns. Click on the pattern you want to add to the block. The pattern will turn blue. The OK button will no longer be hatched and the pattern list will turn white instead of colored.

Cartridge



Press OK to accept the selected pattern as the pattern to add.

Cartridge

The screenshot shows a software window titled "Block Editor - Block". It contains several input fields and buttons. At the top, "Block No." is set to 1 and "Total Rows" is 16. Below that, "Pattern No." is 901. There are two input boxes for "Stitches / Rows" with values 15 and 16. "Start Row" is 1 and "Knitting Rows" is 16. "End Needle Selection" is set to "Free" and "Arrange" is set to "AllOver". "Pattern Position" has "R/L" set to "L" and "Needle No" set to 7. There are four buttons: "Add Before", "Add After", "Delete", and "Delete All". A "Close" button is circled in red. At the bottom, there are four tabs: "Block", "Holder Position", "Knitting Range", and "Stop Positions".

Pattern 901 is added to the block with standard settings.

You can modify the settings to suite your needs.

The settings are divided in 4 sections: Block, Holder, Ranges and Stops.

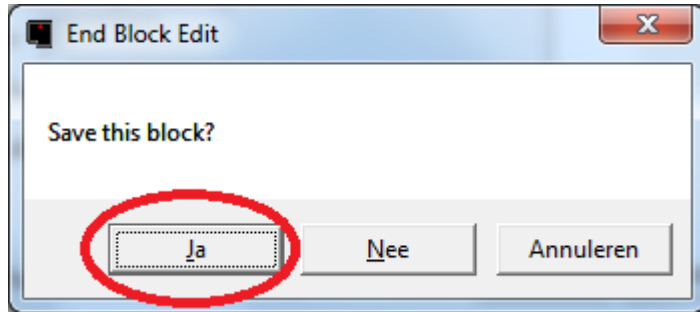
You can access the sections by clicking on one of the tabs at the bottom of the window.

If you want to change End Needle Selection click on the picture next to Free and you will see the alternatives.

You can add more patterns by pressing Add Before or Add After. The pattern you add will be added before or after the selected pattern.

Press Close when done editing of this block.

Cartridge



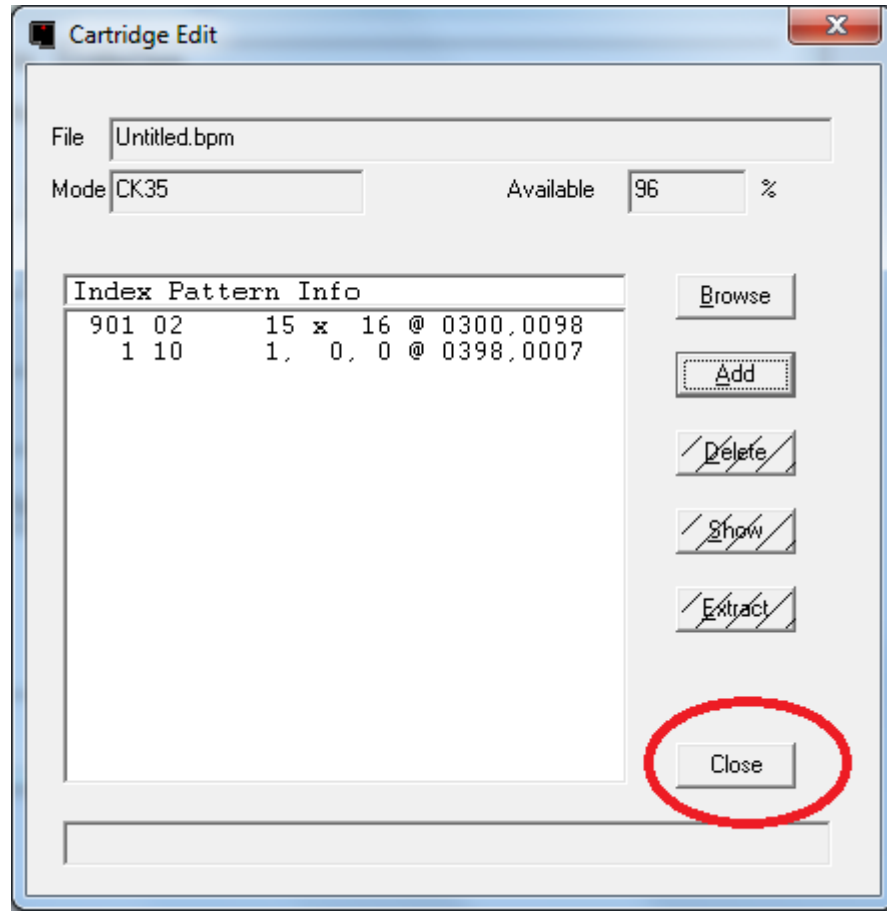
As you created a new block, the block is changed.

You are invited to save the block.

There are three choices:

1. Yes -> save the block
2. No -> discard the block
3. Cancel -> continue editing

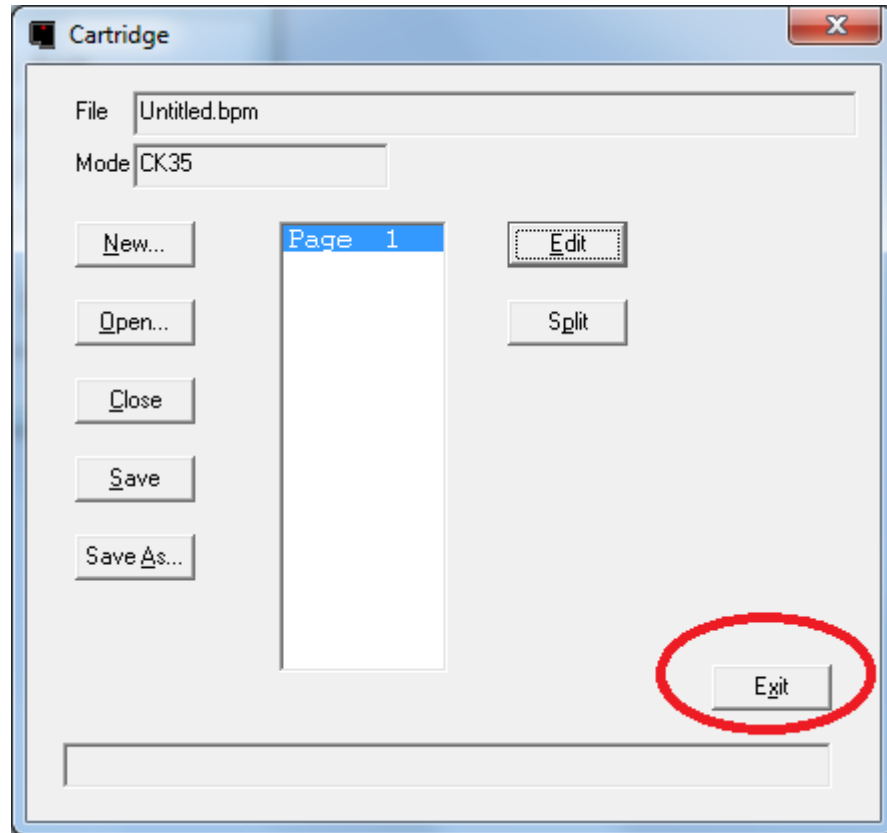
Cartridge



You see now that we have the pattern #901 and block #1.

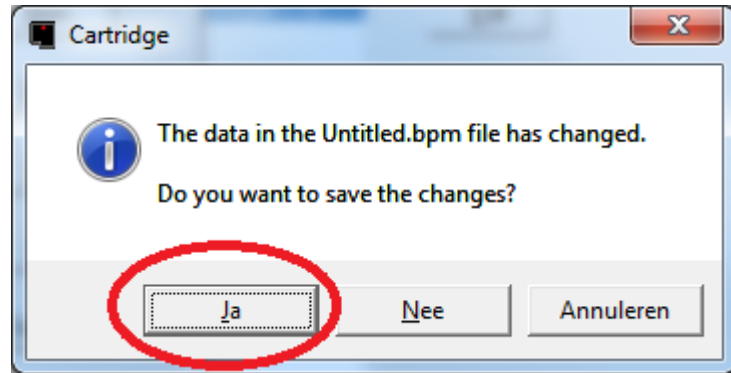
It is block #1 that can be knitted on the CK35.
Press Close to finish editing.

Cartridge



We are done editing the Brother Pattern Memory. Press Exit to get back to the User Interface so we can write the data to the Cartridge.

Cartridge

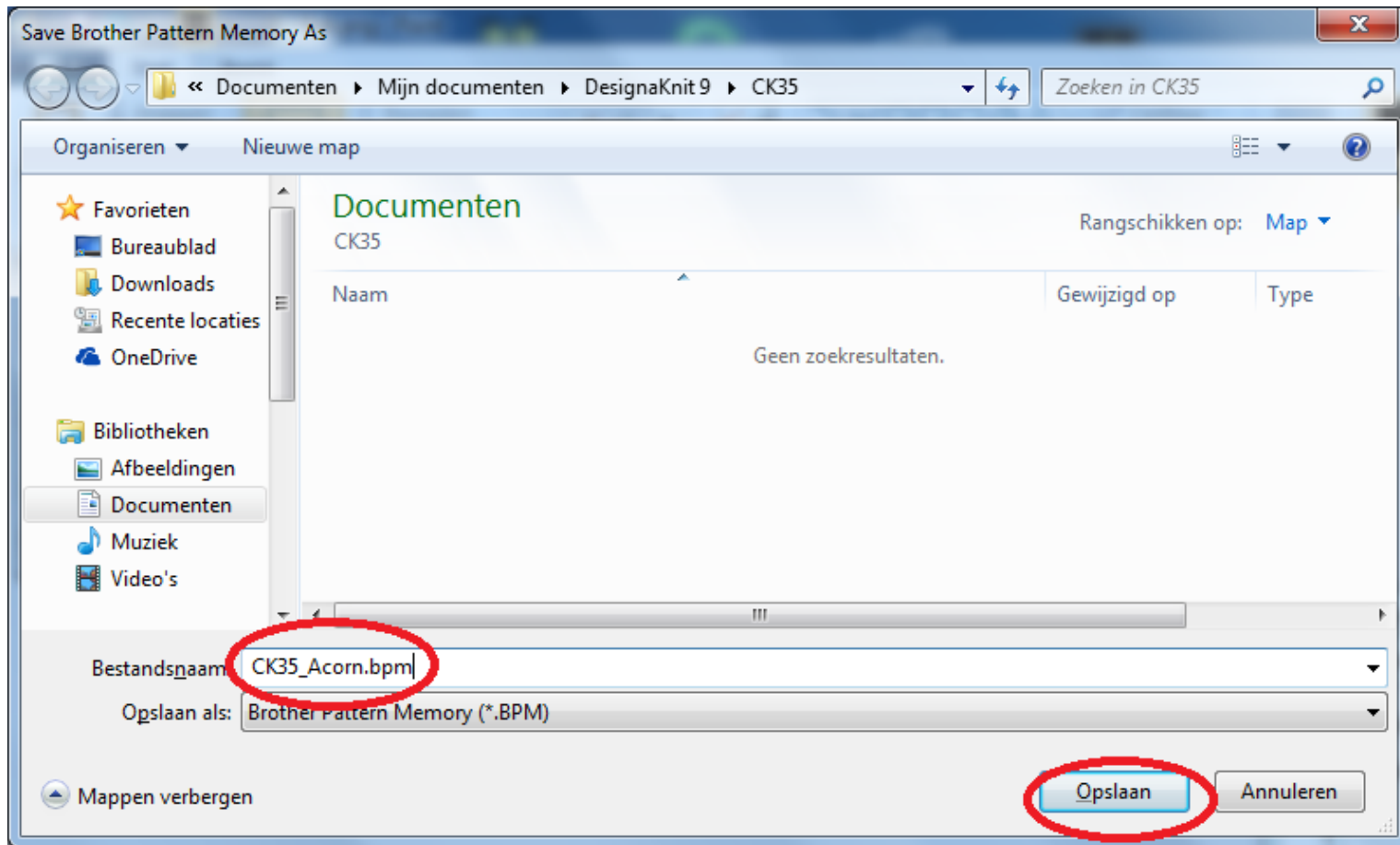


Cartridge Utility has determined that you changed the Brother Pattern memory and wants to know whether you want to save the data on your computer.

There are 3 choices:

1. Yes -> change the data
2. No -> discard the data
3. Cancel -> continue editing

Cartridge



You are invited to specify a name for the Brother Pattern Memory we just created.

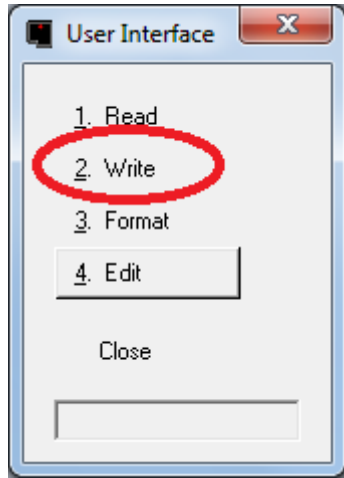
The name Untitled.bpm is not really suitable as you want the name to reflect the contents of the file.

You can overwrite the text Untitled.bpm.

I picked CL35_Acorn which includes machine and pattern.

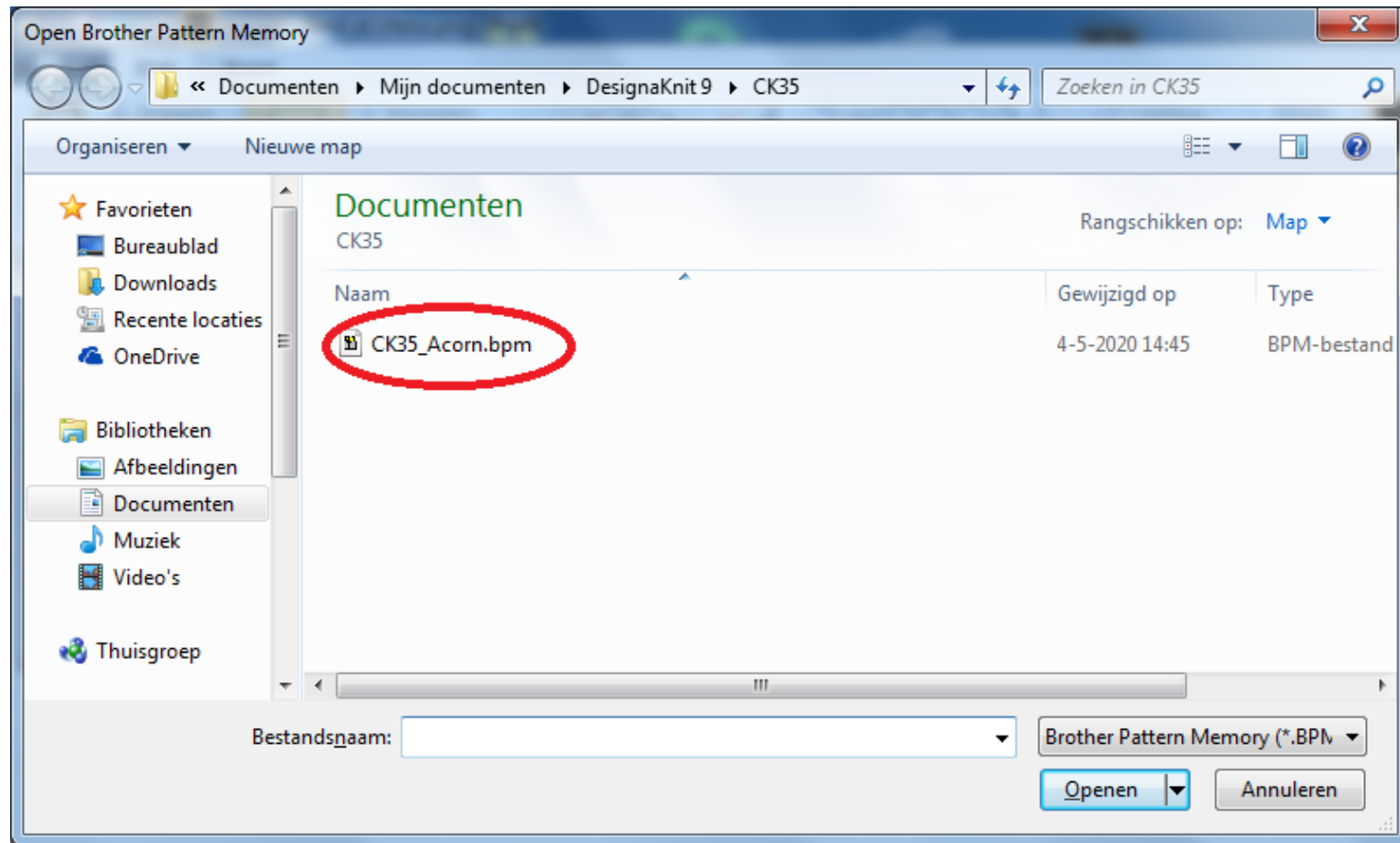
You don't have to type .bpm at the end; .bpm will be added if needed.

Cartridge



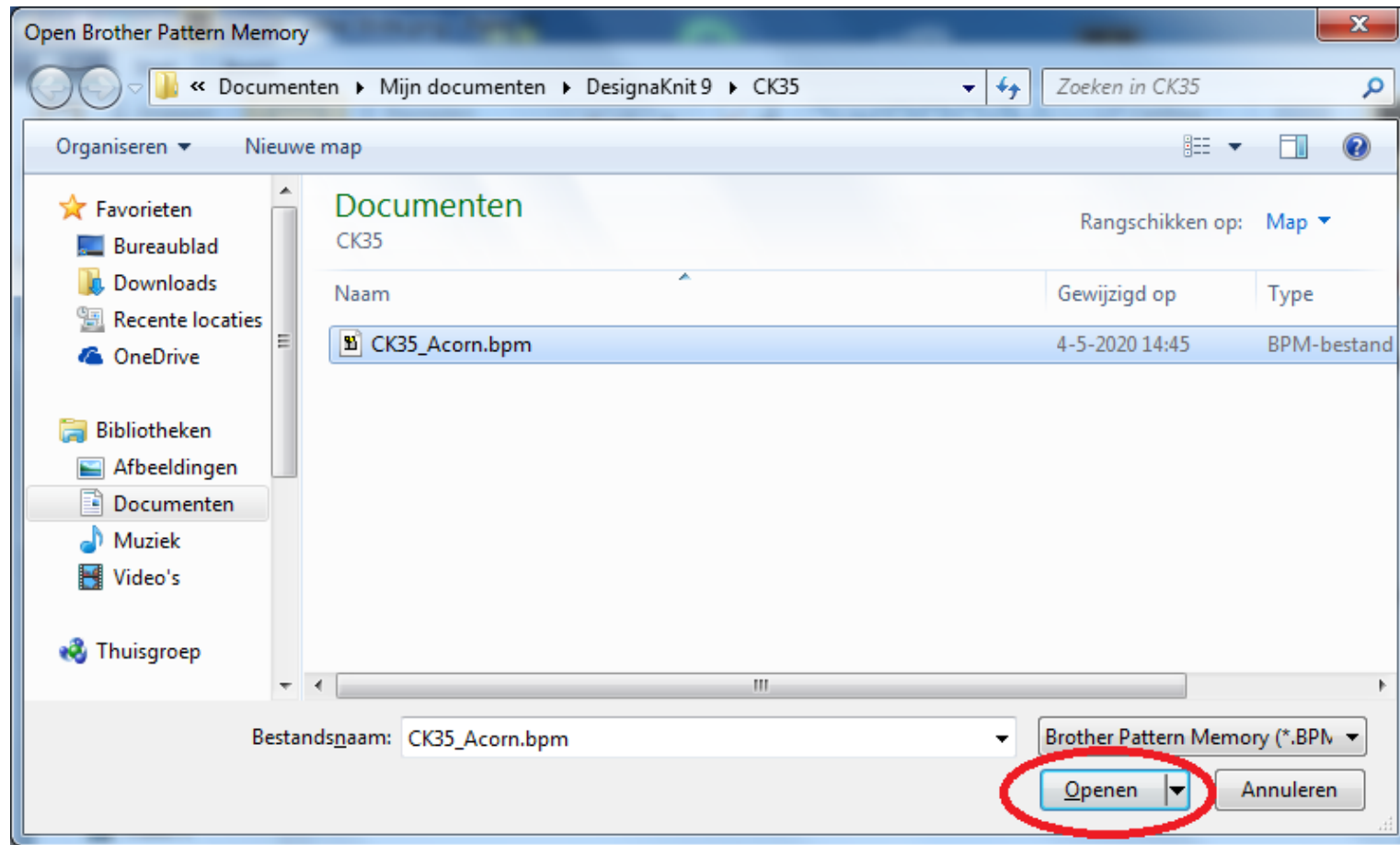
The last step is to write the Brother Pattern Memory file we just created to the Cartridge.
Press the Write button.

Cartridge



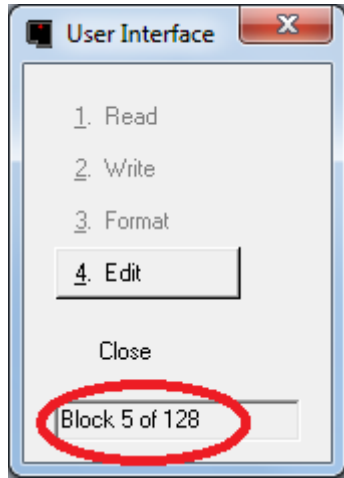
For the write process you need to specify the name of the Brother Pattern Memory file you want to write to cartridge. Browse your computer to locate the BPM file. Once found click on the BPM file to select it.

Cartridge



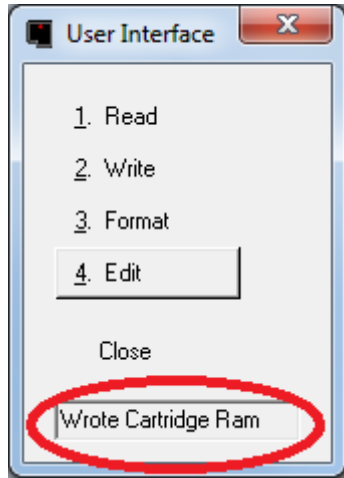
When you selected the Brother Pattern Memory file, it turned blue. The name was copied to the filename field. You can now press Open to start the write process.

Cartridge



During the write process you are informed of the progress. The number of blocks to be written is 128. The figure between the words Block and of will increment.

Cartridge



When you see the message Wrote cartridge Ram, you know that the Cartridge is written. Disconnect Cartridge from your computer. You can now use Cartridge in the knitting machine. You can knit the acorn pattern by selecting block 1.